




Wilson Road Clumber, QLD

 63.08 m2

ESCAPE EVERYTHING

At the very end of a quiet road you will find an adventurous track that leads you up the mountain into a nature reserve, perfect for those weekend camping trips with friends and family. Neighbouring onto national park, this will suit a buyer who has a keen interest in preservation, bush walking, camping or perhaps even downhill bike riding. Immediately behind this property is Governors Chair, Spicers Peak and Double Top Mountain. There is an approximate 1km long "4WD only" easement that gets you to the 2 acre camping area on the property. Views to distant mountains are prominent from the lookout point through the tree tops. Features on the property include beautiful grass trees, rock boulders, seasonal water holes, established historic trees and camping grounds with fire-pit. Included in the sale is a second hand caravan, please email for further details.

Price: \$550,000

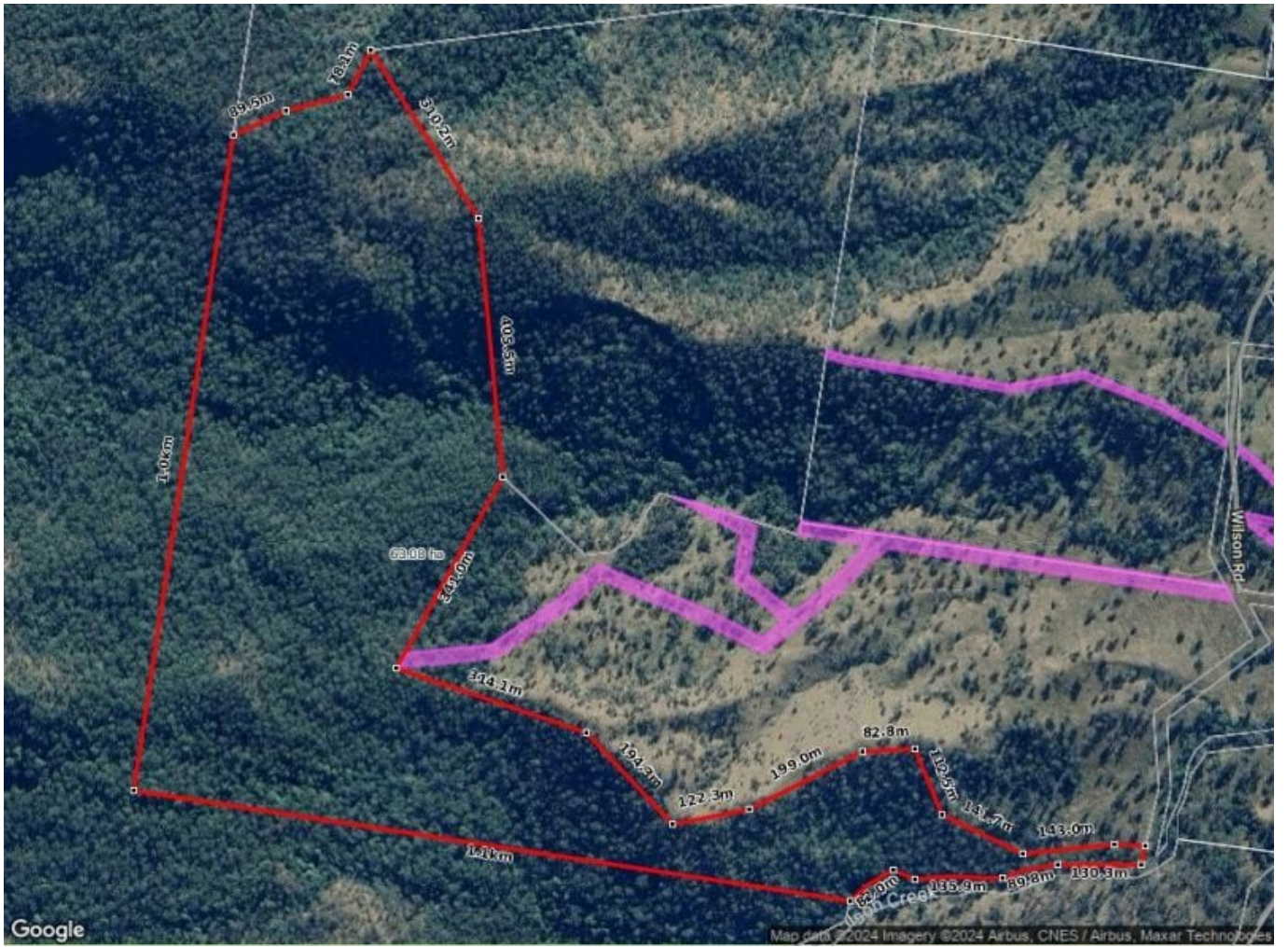
Property Type: Rural

Bartholomew and Co Real Estate has taken all reasonable steps to ensure that the informati

Tony, Gordon & Joey

0754631699

Boonah



Wilson Road

Clumber, QLD